



TOWN OF BARGERSVILLE

P.O. Box 420 • Bargersville, IN 46106

Phone: 422-5115 • FAX: 422-3743

www.townofbargersville.org

POWER & LIGHT • WATER WORKS • SANITATION DEPARTMENT • STORM WATER

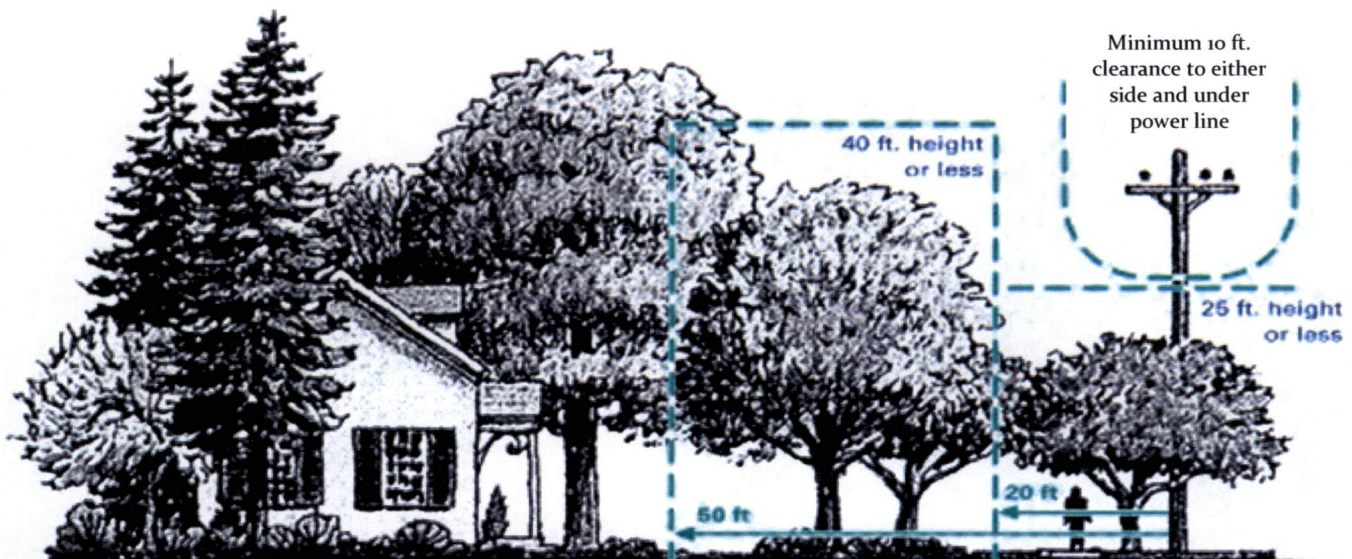
ELECTRICAL LINE CLEARANCE STANDARDS

Distribution lines carry power from local substations to homes and businesses. A distribution right of way gives access to a strip of land so that utilities (electric, telephone, cable, water and/or gas) may build and maintain service lines. These lines may be along your street within the road right of way or in your backyard within an easement.

Certain rights have been granted to utilities to allow for maintenance of their facilities in order to deliver a safe and reliable product to your site. Pruning and/or removal of trees, and sometimes shrubs and vines, is necessary in order to protect the service you are paying for.

Clearance guidelines based on the voltage of the line have been given to our line clearance (tree worker) contractors to follow in order to properly maintain lines, transformers, poles and other hardware that make up the electric distribution line design. The tree worker is instructed to prune limbs that have the potential to cause a problem with your electric service. Ten (10) feet below and to the sides is the minimum for our primary wires in most cases. Lesser clearance is necessary for secondary wires and minimal clearing will be done for the wire that goes directly to the meter on your house. Branches overhanging a configuration of three (3) primary wires will be removed. Branches overhanging a single primary wire will require at least fifteen (15) feet of clearance. Removal of whole trees will be considered on a case by case basis.

Planting Trees Near Distribution Lines



Tall trees, such as Maple,
Oak, Spruce, Pine

Medium trees, such as:
Washington, Hawthorn,
Golden Raintree

Small trees, such as:
Redbud, Dogwood, Crabapple